

An aerial photograph of a vibrant city square, likely in Copenhagen, showing a mix of historic and modern architecture, a central fountain, and a large number of people and bicycles. The square is paved with a geometric tile pattern. A semi-transparent grey rectangle is overlaid in the center, containing the text.

# NOR.VENTURES

Providing a foundation for growth & development in many sectors.



# CONTENT

1

WHO WE ARE

2

YOUR OBSTACLE

3

INCUBATOR  
IMPACT

4

KEY COMPETENCE

5

FROM PROBLEM  
TO SOLUTION

6

PORTFOLIO  
SHOWCASE

7

THE PERFECT  
BUSINESS

8

CONTACT INFO

# WHO WE ARE

## NOR.VENTURES

Is a danish company who consists of a small team with a broad spectrum of competences. We specify in financial understanding and core business development.

## INCUBATOR ATMOSPHERE

Nor.Ventures aims to provide the foundation for growth and development by providing solutions to current obstacles in the business model.

## KEY MARKETS

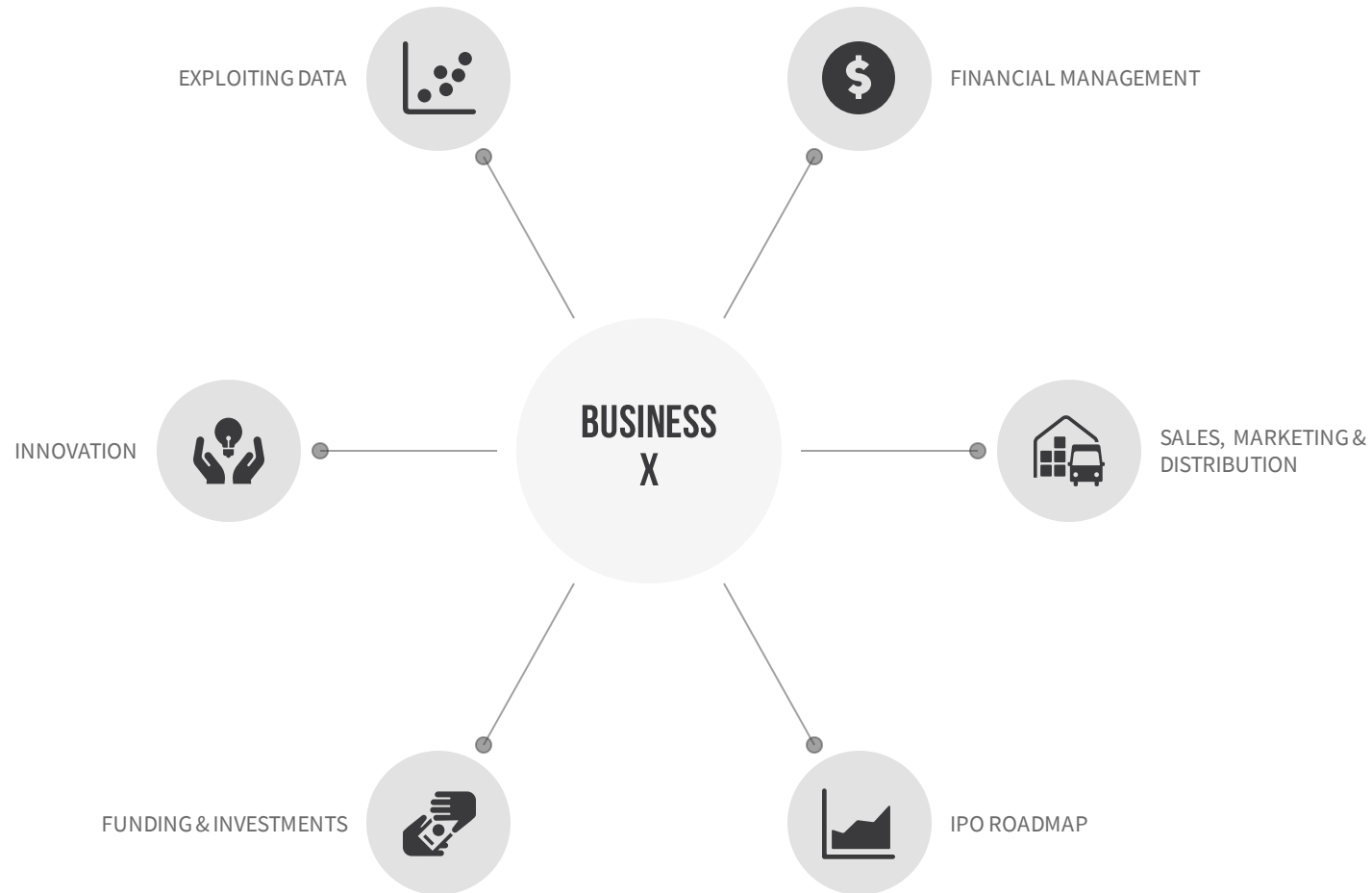
1. Digital health & Telemedicine
2. Finance
3. Ecommerce
4. Artificial intelligence
5. Initial Public Offering





**WHAT PROBLEMS  
CAN WE SOLVE?**





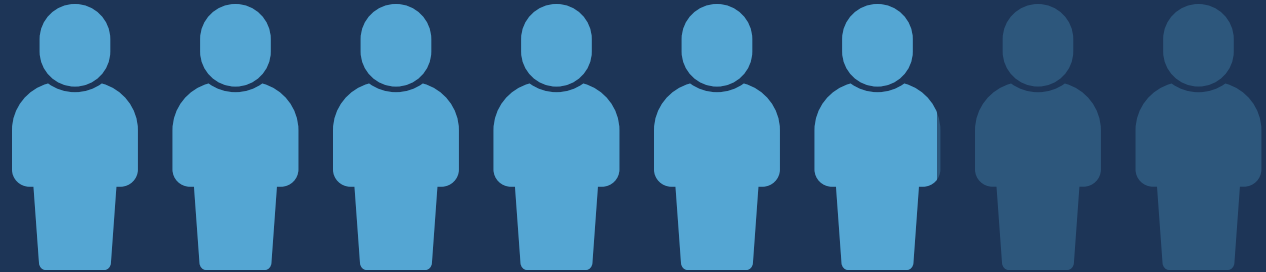
# YOUR OBSTACLE

It is essential to focus on your business and the main challenges you are trying to solve in order for the company to meet the goals and forecasts for the future.



# INCUBATOR IMPACT

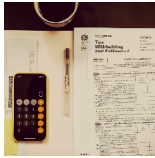
73%



Of companies that have been involved with business incubation find that the incubator have been vital or significant in order for them to achieve their desired growth and success.



# KEY COMPETENCES



## Financial Management

- The heart of Nor.Ventures lies in financial understanding & management. This enables us to account, analyze and access even the most complex financial situation and find a solution.



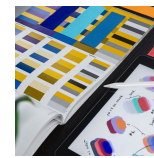
## Capital Access & Funding

- Through many years in the venture industry we have obtained unique investor relations and access to private equity, loans, grants, crowdfunding and other funding opportunities.



## Research & Analysis

- Nor.Ventures provides research & analysis in relation to the market, financial situation, competitors and business internals to find unique growth opportunities



## Branding

- Together with you, we are able to form and tell the embracing story behind the company and allow the customers to be a part of our future.



## Legal & Regulatory Compliance

- Nor.Ventures will provide an assisting role in covering all legal & regulatory factors within your business development.



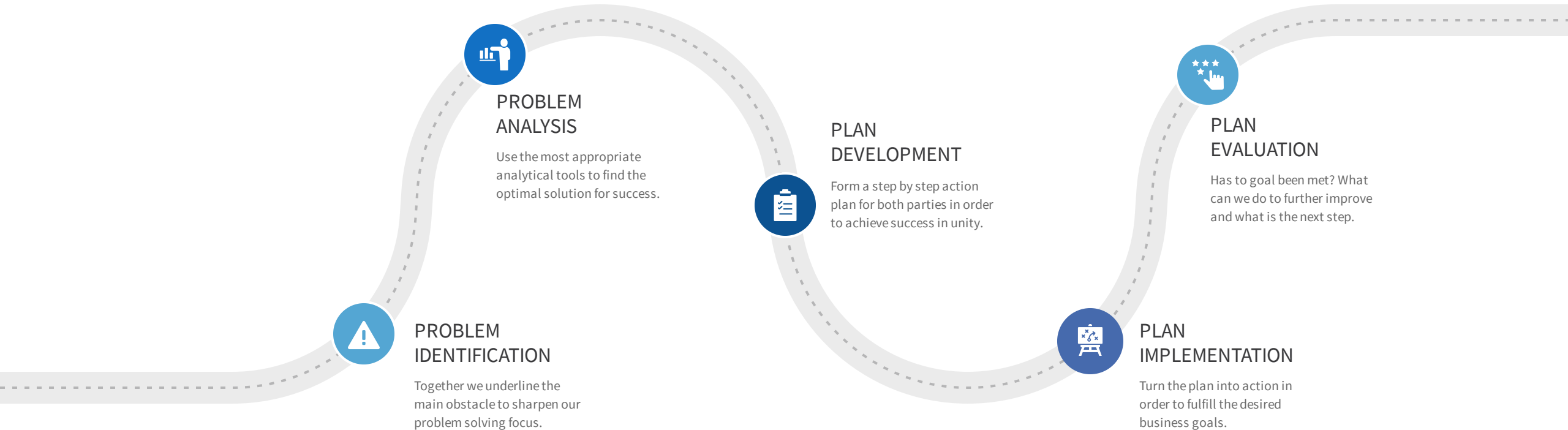
## Advisory Services

- Within business development and growth, important decisions have to be made frequently. Nor.Ventures ensures that this process will include an extensive analysis of all opportunities and risks associated.





# FROM PROBLEM TO SOLUTION



“Our goals can only be reached through a vehicle of a plan, in which we must fervently believe, and upon which we must vigorously act. There is no other route to success.” Pablo Picasso

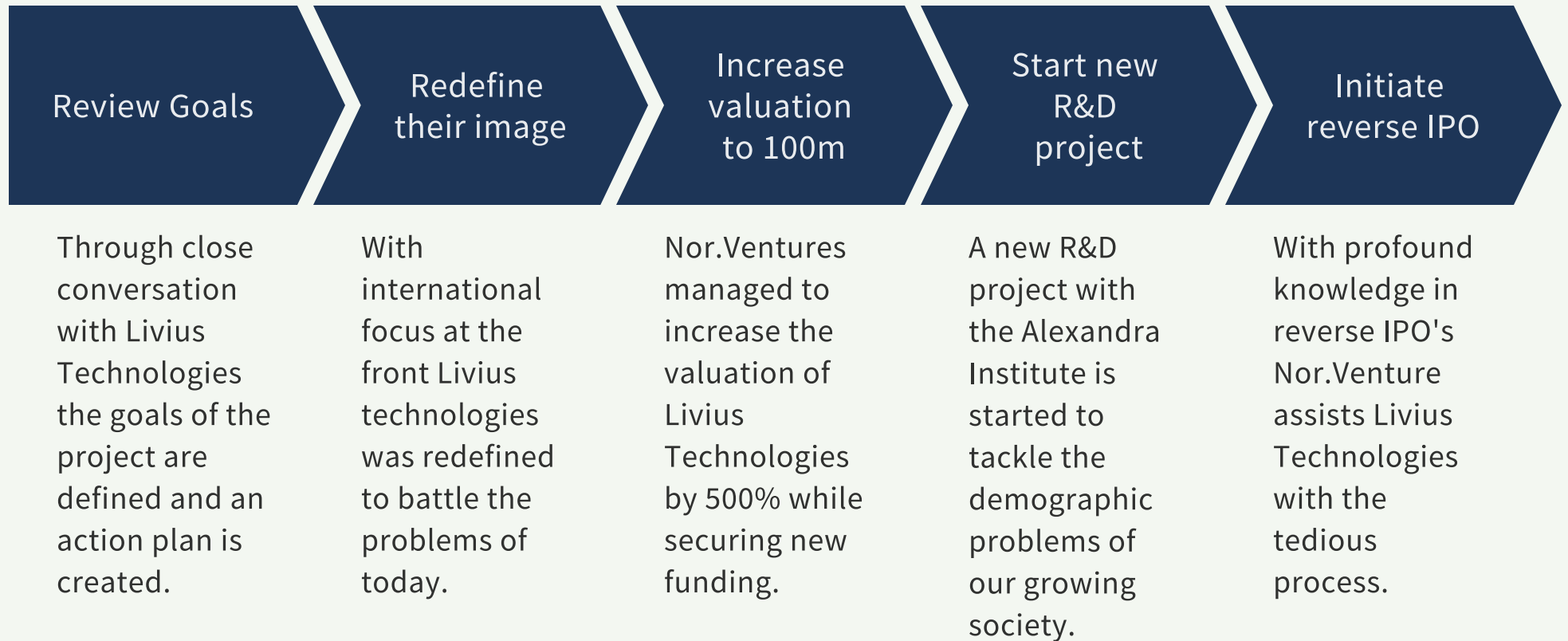
# OUR PORTFOLIO SHOWCASE





# LIVIUS TECHNOLOGIES

How Nor.Ventures helped Livius Technologies with their road to a reverse IPO.



# 1ST

IN AI FUEL PRICE MANAGEMENT

# 10.000+

SITES INSTALLED WORLDWIDE

# 30+

COMPANIES USE A2I TODAY



*Nor.Ventures entered A2I Systems in 2015 with plans to offer funding, strategies for international growth and how to improve the AI model to be commercially superior.*



*Since 2015 the valuation of A2I has increased by \$50M by developing software, achieving international attention and providing a foundation for growth.*



*A2I has developed relationships with large corporations around the world by creating value for them individually.*



*An innovative process have been established within A2I in order for the business to grow into the retail sector.*



# A2i SHOWCASE

Nor.Ventures helped A2i to increase their gross profit



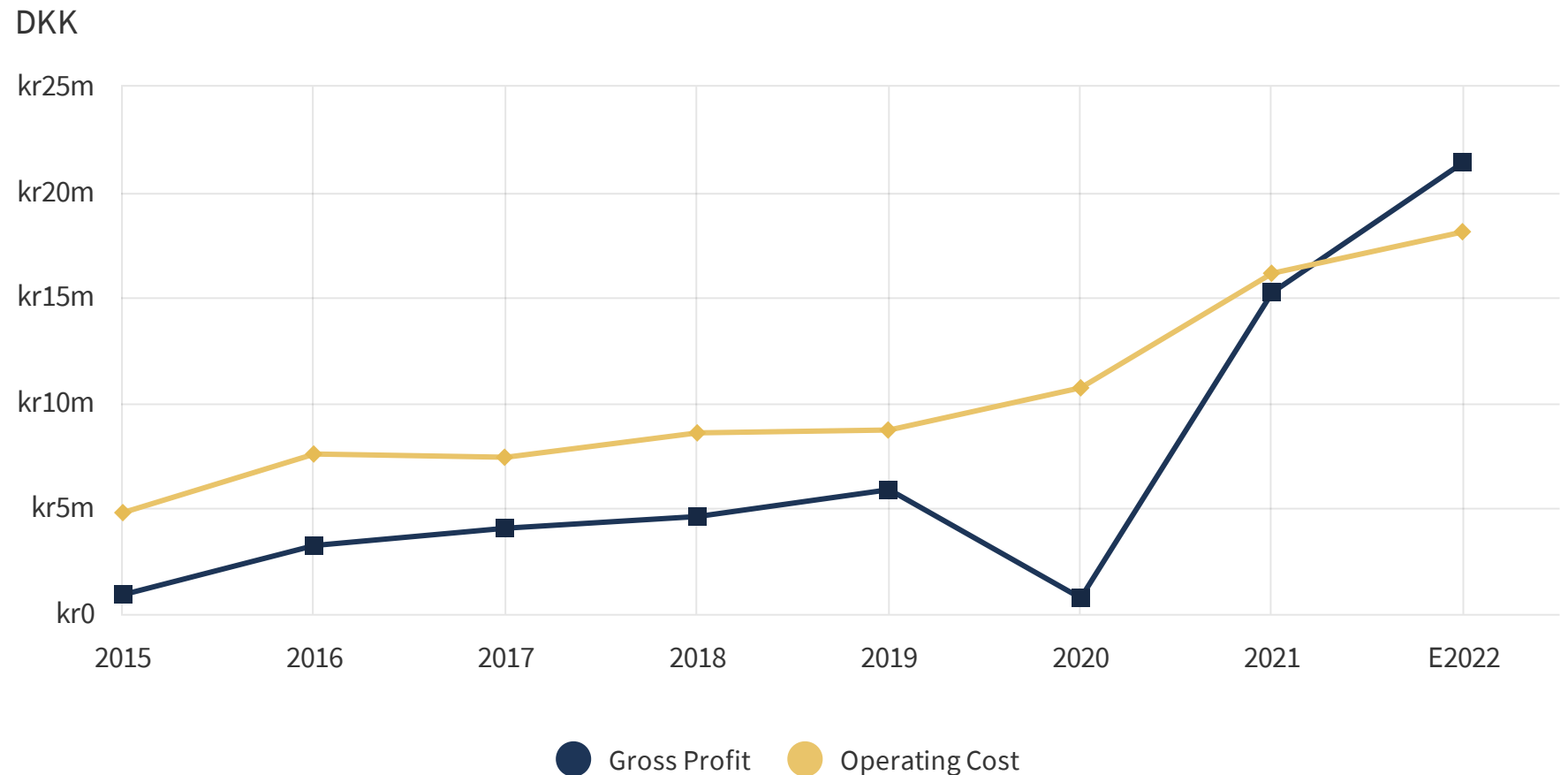
OVER

**1570%**

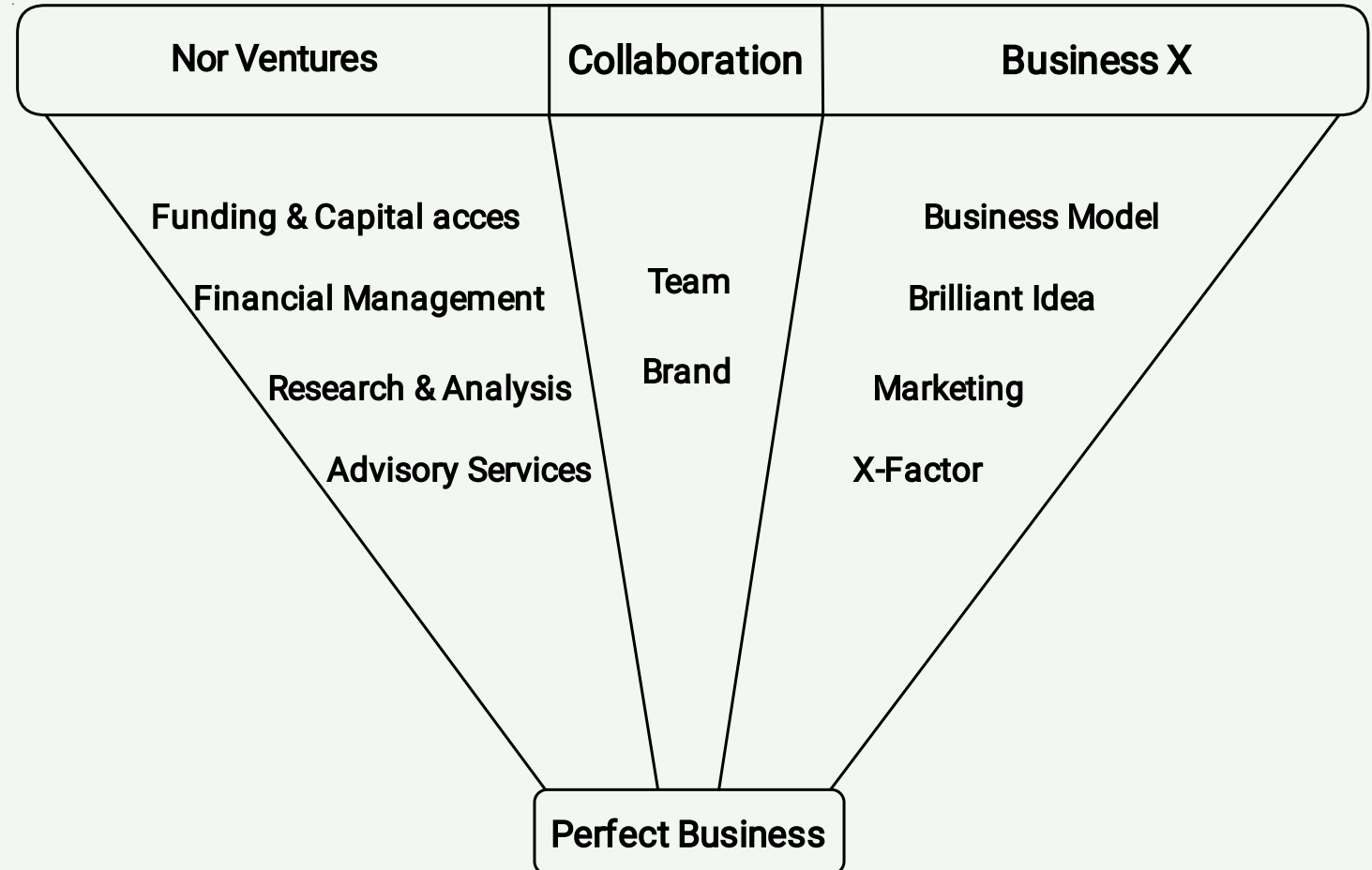
GROWTH ON GROSS PROFIT  
(2015-2021)

EXPECTED POSITIVE NET  
PROFIT IN 2022

Growth in gross profit and operating cost



# THE PERFECT BUSINESS







# WANT TO KNOW MORE?

Vestergade 18E | 1456 Copenhagen | Denmark



Lisbeth Bak, CEO



Info@nor.ventures



[Nor.Ventures](#)



+45 28 87 82 85